

ACALETICS® - PARTNERSHIPS

# GAP ANALYSIS REPORT

NON-ECONOMICALLY DISADVANTAGED  
vs. ECONOMICALLY DISADVANTAGED

2019 (PRE-COVID) TO 2024 (POST-COVID)  
FAST MATH ACHIEVEMENT



1-866-877-1222

[www.acaletics.com](http://www.acaletics.com)

Report Date: 06/02/2025

## About ACALETICS®

Founded in 1985, ACALETICS is a system of evidence-based and results-based supplemental products and services. The program is designed to enhance classroom instruction and boost student performance and achievement. The ACALETICS® model is based on the idea that, like athletics, success in academics requires a structured game plan for preparation, conditioning, analysis, and redress.

ACALETICS® has helped over 600 schools and more than 1 million students dramatically improve classroom instruction and learning, test scores, and student competence and confidence by providing invaluable resources and direct support to teachers and school administrators.

ACALETICS® was recognized by the Florida Department of Education and the Council for Educational Change (CEC), established by the Florida Annenberg Challenge, as a Best Practice in Mathematics at the 8th Florida Leadership Academy held at the University of South Florida in Tampa.

### ACALETICS® 4-Pronged Approach

#### **Content-focused**

- Materials are strategically designed to help teachers focus on what matters most – developing conceptual understanding, procedural skills and fluency, and application with equal intensity.

#### **Data-driven Instructional Model**

- This model is designed to supplement instructional time by incorporating opportunities for extended exposure to concepts and skills as well as multi-strand exposure to concepts and skills within the designated class period. This is achieved through the highly-successful **Math Club<sup>SM</sup>**. Key to the success of **Math Club<sup>SM</sup>** is the creation of an emotionally-safe environment where intellectual risk-taking is cultivated.

#### **Ongoing Assessment and Accountability**

- ACALETICS® provides a comprehensive system of assessment and progress-monitoring tools to help schools set their goals and make decisions about how to reach them. With the support of an ACALETICS® consultant, the assessment data is analyzed and organized to enable teachers to align their instruction to more effectively meet the needs of the students.

#### **Professional Development**

- Professional development is a key component of the ACALETICS® system. Activities include data analysis, workshops and in-class demonstrations to model effective instructional techniques and strategies.

The evidence of successful partnerships between ACALETICS and schools is clear and compelling. We are confident our unique combination of content-focused materials that are fully-aligned with the more rigorous state standards, data-driven instructional best practices, a system of assessment and accountability and ongoing formal and informal professional development and support, will allow us to continue to help facilitate teacher planning and instruction and improve student performance in math.

## Executive Summary

- ***Endeavour Primary Learning Center*** increased its Economically Disadvantaged (Econ.) subgroup Percent Scoring At/Above Satisfactory by **+39** percentage points from 2019 Pre-Covid to 2024 Post-Covid! ([See Page 3](#))
- ***Freedom Elementary*** increased its Economically Disadvantaged (Econ.) subgroup Percent Scoring At/Above Satisfactory by **+22** percentage points from 2019 Pre-Covid to 2024 Post-Covid! ([See Page 4](#))
- ***North Fork Elementary*** increased its Economically Disadvantaged (Econ.) subgroup Percent Scoring At/Above Satisfactory by **+20** percentage points from 2019 Pre-Covid to 2024 Post-Covid! ([See Page 5](#))
- ***Bond Elementary*** increased its Economically Disadvantaged (Econ.) subgroup Percent Scoring At/Above Satisfactory by **+18** percentage points from 2019 Pre-Covid to 2024 Post-Covid! ([See Page 6](#))
- ***Lawnwood Elementary*** increased its Economically Disadvantaged (Econ.) subgroup Percent Scoring At/Above Satisfactory by **+21** percentage points from 2019 Pre-Covid to 2024 Post-Covid! ([See Page 7](#))
- ***Chester A. Moore Elementary*** increased its Economically Disadvantaged (Econ.) subgroup Percent Scoring At/Above Satisfactory by **+35** percentage points from 2019 Pre-Covid to 2024 Post-Covid! ([See Page 8](#))
- ***Charles Drew Elementary*** increased its Economically Disadvantaged (Econ.) subgroup Percent Scoring At/Above Satisfactory by **+18** percentage points from 2019 Pre-Covid to 2024 Post-Covid! ([See Page 9](#))
- ***Walker Elementary*** increased its Economically Disadvantaged (Econ.) subgroup Percent Scoring At/Above Satisfactory by **+26** percentage points from 2019 Pre-Covid to 2024 Post-Covid! ([See Page 10](#))

## Subgroup Achievement Gap Analysis - Math

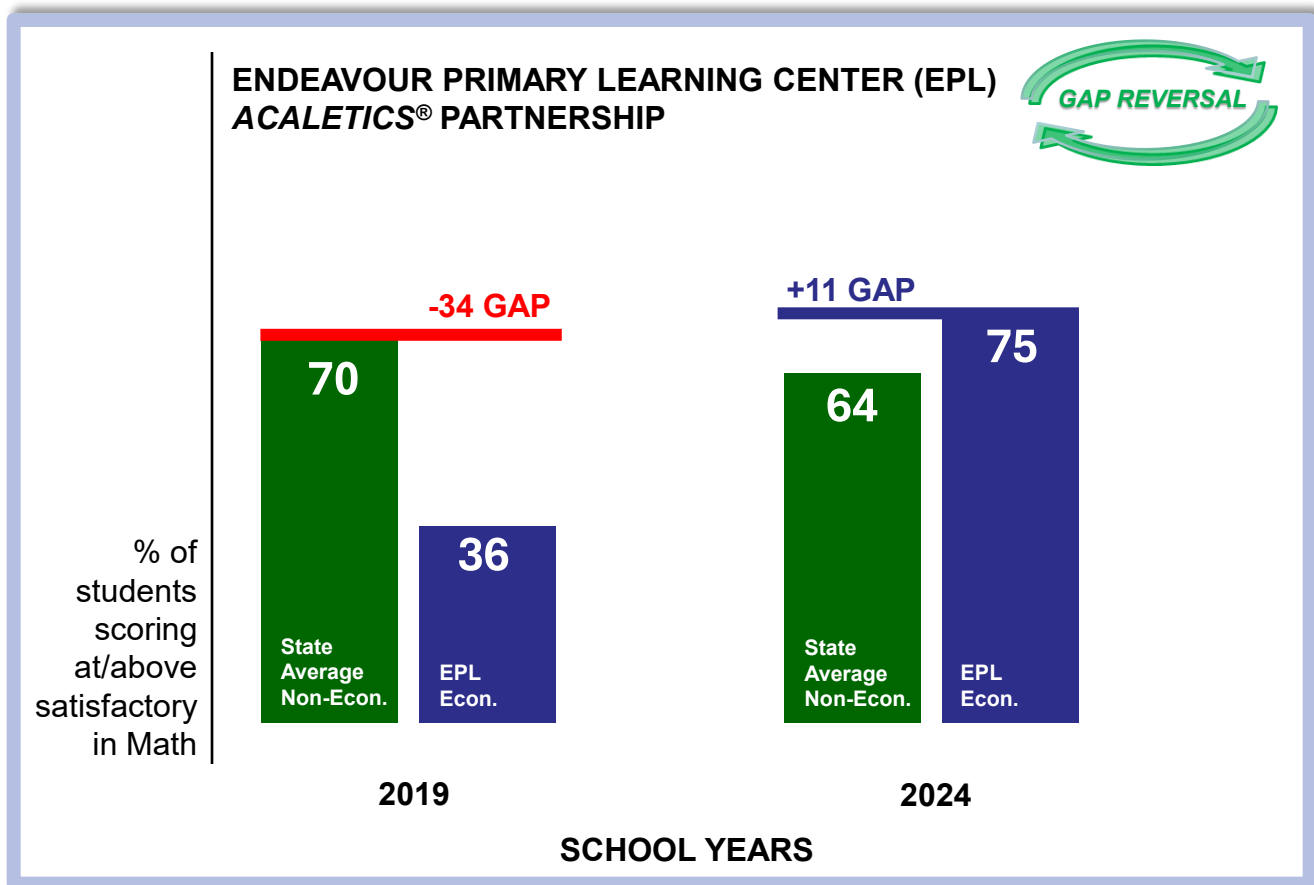
**ENDEAVOUR PRIMARY LEARNING CENTER — Broward County**

### 2019 to 2024 Math Achievement Gap

State Average (Non-Econ.)

vs.

Endeavour (Econ.)



Data Source:  FLORIDA DEPARTMENT OF  
EDUCATION  
fldoe.org

#### Endeavour Primary Learning Center (EPL):

- EPL has increased its Economically Disadvantaged subgroup Percent Scoring At/Above Satisfactory by **+39** percentage points from 2019 Pre-Covid to 2024 Post-Covid!
- In 2019, EPL's Economically Disadvantaged subgroup was below (-34 percentage points) the State Non-Economically Disadvantaged Subgroup in Percent of Students Scoring At/Above Satisfactory in Math. As a result of our partnership, EPL **exceeded** the **achievement** of the State Non-Economically Disadvantaged subgroup by **+11** percentage points ("**A GAP Reversal**") in 2024!

## Subgroup Achievement Gap Analysis - Math

**FREEDOM**

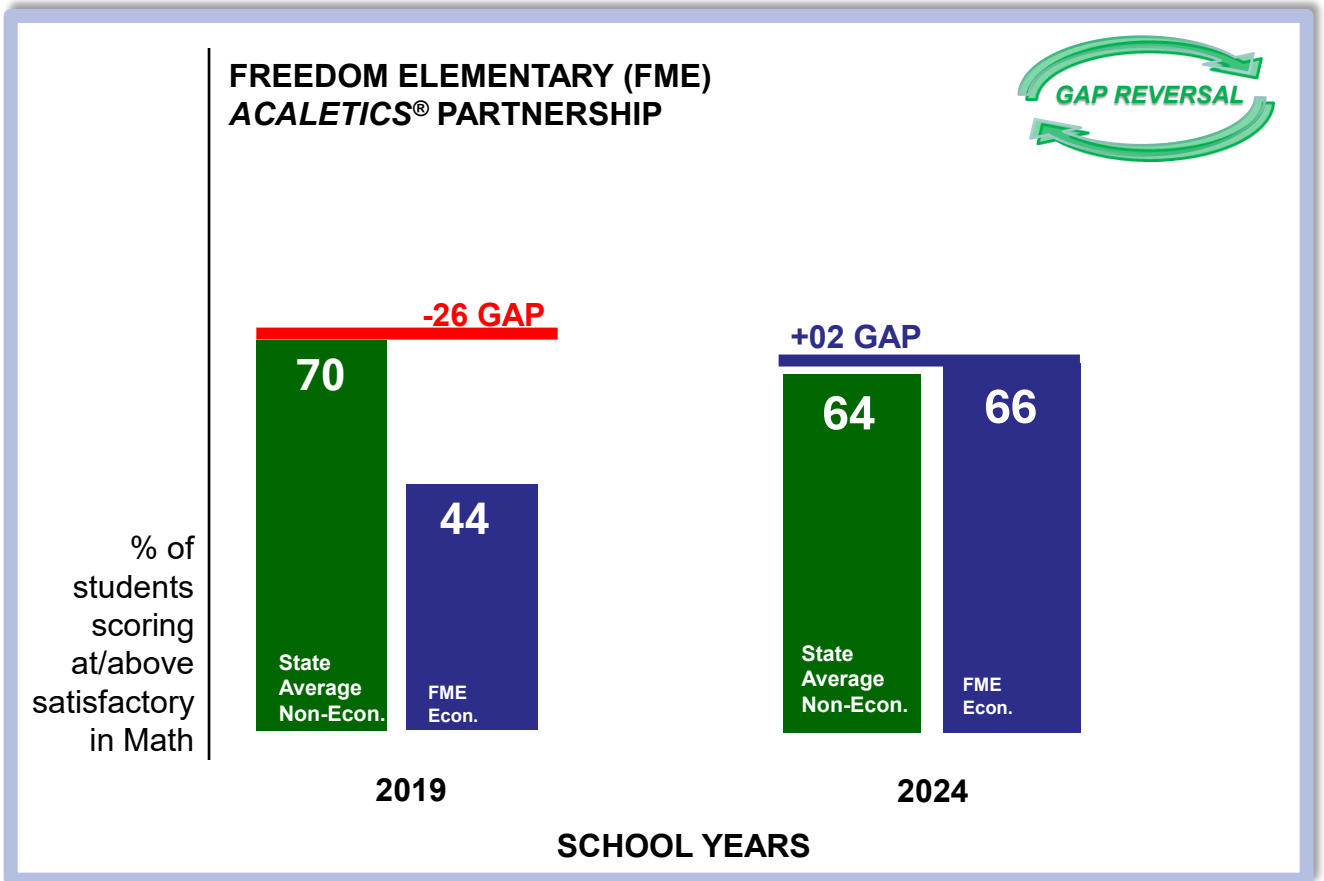
**ELEMENTARY — Manatee County**

### 2019 to 2024 Math Achievement Gap

State Average (Non-Econ.)

vs.

Freedom (Econ.)



Data Source:  FLORIDA DEPARTMENT OF  
EDUCATION  
fldoe.org

#### Freedom Elementary School (FME):

- FME has increased its Economically Disadvantaged subgroup Percent Scoring At/Above Satisfactory by **+22** percentage points from 2019 Pre-Covid to 2024 Post-Covid!
- In 2019, FME's Economically Disadvantaged subgroup was below (-26 percentage points) the State Non-Economically Disadvantaged Subgroup in Percent of Students Scoring At/Above Satisfactory in Math. As a result of our partnership, FME **exceeded** the **achievement** of the State Non-Economically Disadvantaged subgroup by **+2** percentage points ("**A GAP Reversal**") in 2024!

## Subgroup Achievement Gap Analysis - Math

**NORTH FORK**

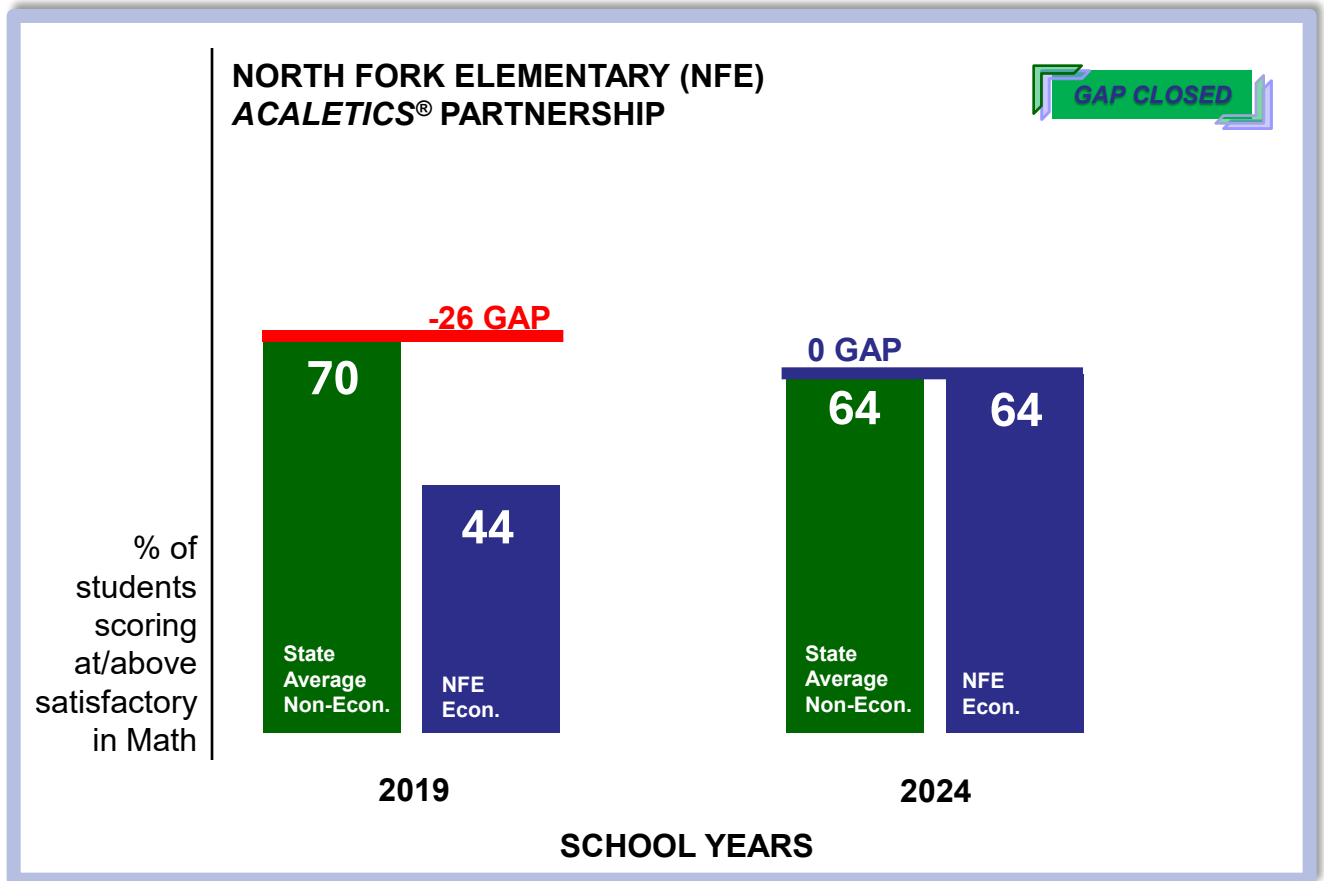
**ELEMENTARY — Broward County**

### 2019 to 2024 Math Achievement Gap

State Average (Non-Econ.)

vs.

North Fork (Econ.)



Data Source:  FLORIDA DEPARTMENT OF  
EDUCATION  
fldoe.org

#### North Fork Elementary (NFE):

- NFE has increased its Economically Disadvantaged subgroup Percent Scoring At/Above Satisfactory by **+20** percentage points from 2019 Pre-Covid to 2024 Post-Covid!
- In 2019, NFE's Economically Disadvantaged subgroup was below (-26 percentage points) the State Non-Economically Disadvantaged Subgroup in Percent of Students Scoring At/Above Satisfactory in Math. As a result of our partnership, NFE **equaled** the **achievement** of the State Non-Economically Disadvantaged subgroup ("**A GAP Closure**") in 2024!

## Subgroup Achievement Gap Analysis - Math

**Bond**

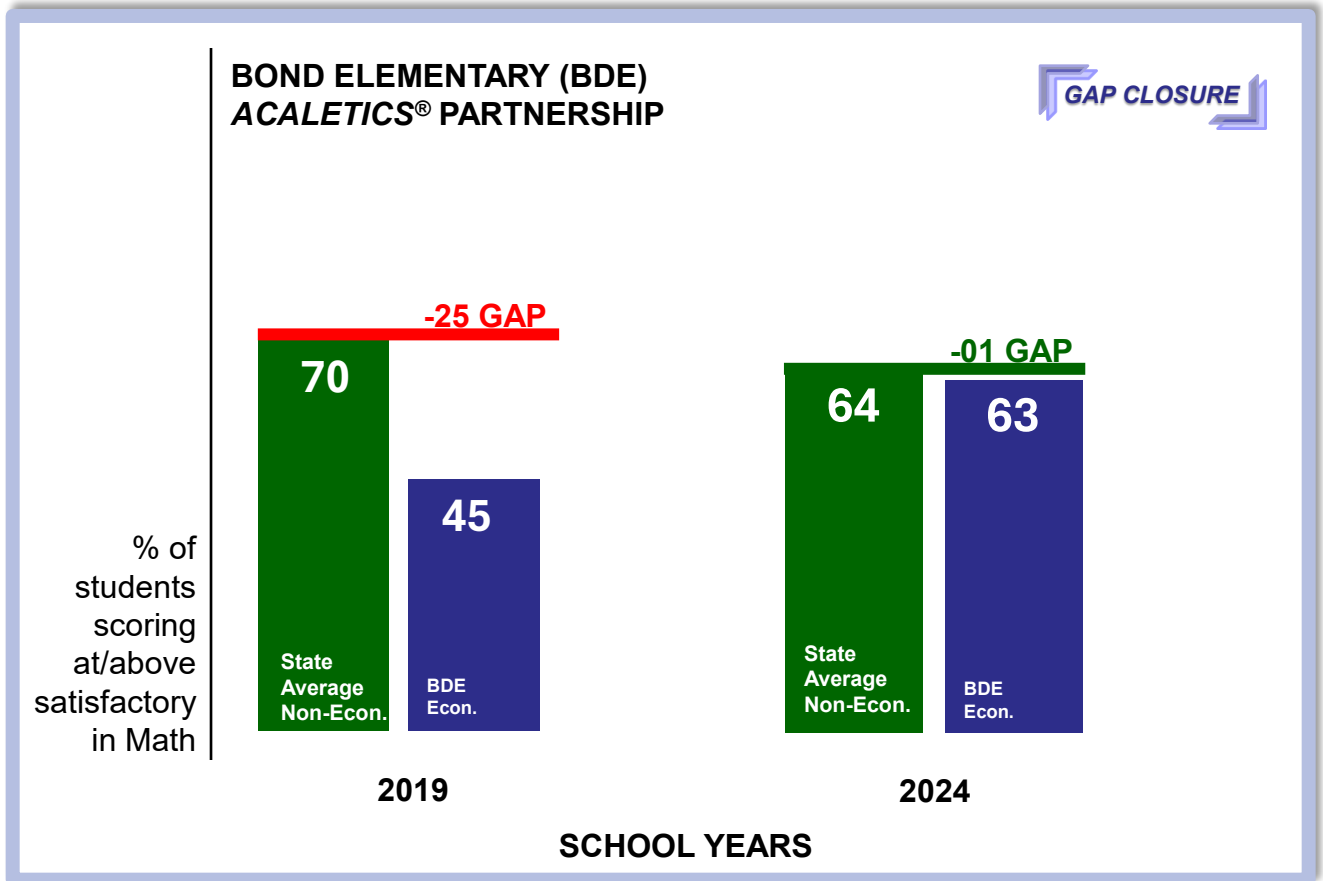
**ELEMENTARY — Leon County**

### 2019 to 2024 Math Achievement Gap

State Average (Non-Econ.)

vs.

Bond (Econ.)



Data Source:  FLORIDA DEPARTMENT OF  
EDUCATION  
fldoe.org

#### Bond Elementary School (BDE):

- BDE has increased its Economically Disadvantaged subgroup Percent Scoring At/Above Satisfactory by **+18** percentage points from 2019 Pre-Covid to 2024 Post-Covid!
- In 2019, BDE's Economically Disadvantaged subgroup was below (-25 percentage points) the State Non-Economically Disadvantaged Subgroup in Percent of Students Scoring At/Above Satisfactory in Math. As a result of our partnership, BDE **reduced** the **achievement gap** by **+24** percentage points in 2024!

## Subgroup Achievement Gap Analysis - Math

**LAWNWOOD**

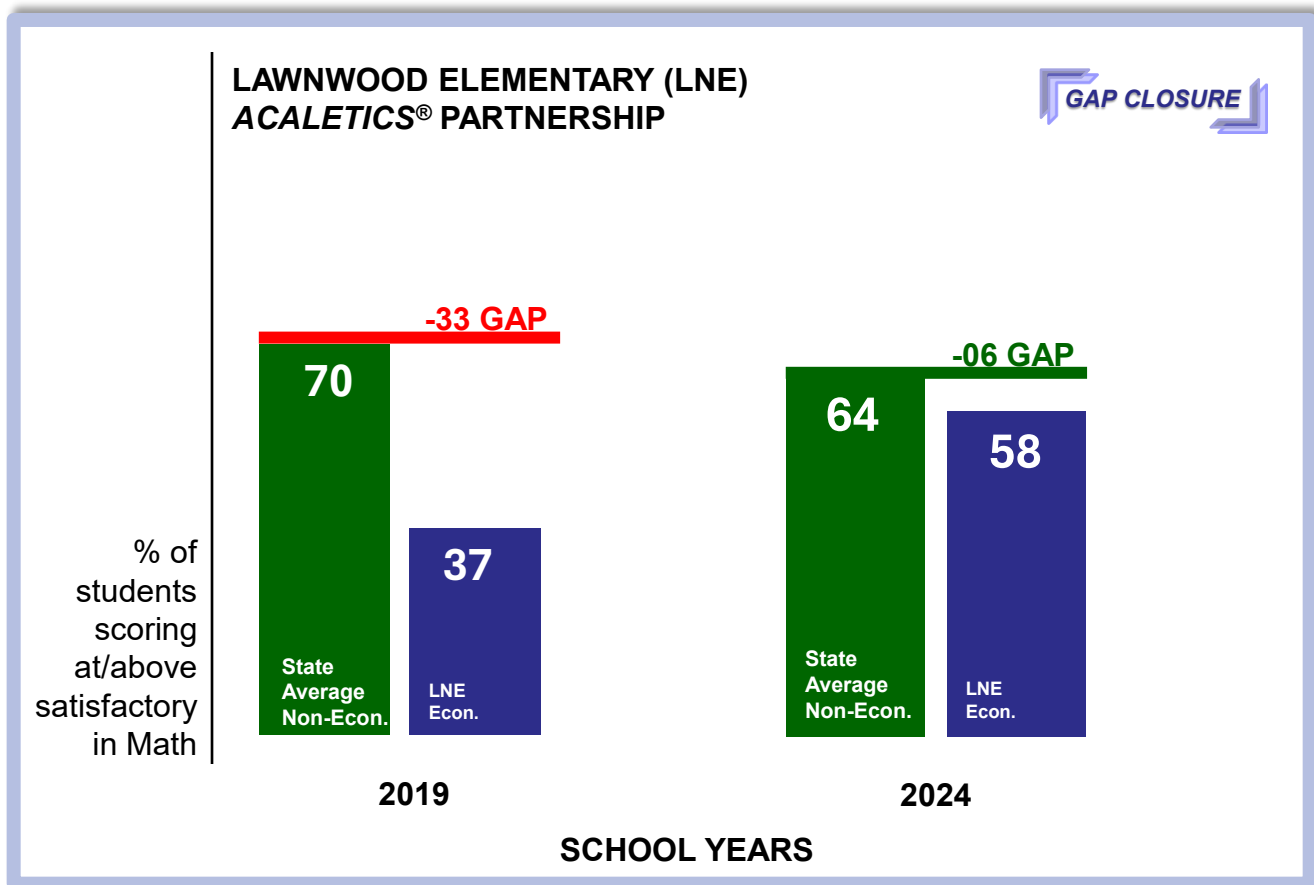
**ELEMENTARY — St. Lucie County**

### 2019 to 2024 Math Achievement Gap

State Average (Non-Econ.)

vs.

Lawnwood (Econ.)



Data Source:  FLORIDA DEPARTMENT OF  
EDUCATION  
fldoe.org

#### Lawnwood Elementary School (LNE):

- LNE has increased its Economically Disadvantaged subgroup Percent Scoring At/Above Satisfactory by **+21** percentage points from 2019 Pre-Covid to 2024 Post-Covid!
- In 2019, LNE's Economically Disadvantaged subgroup was below (-33 percentage points) the State Non-Economically Disadvantaged Subgroup in Percent of Students Scoring At/Above Satisfactory in Math. As a result of our partnership, LNE **reduced** the **achievement gap** by **+27** percentage points in 2024!



## Subgroup Achievement Gap Analysis - Math

**CHESTER A. MOORE**

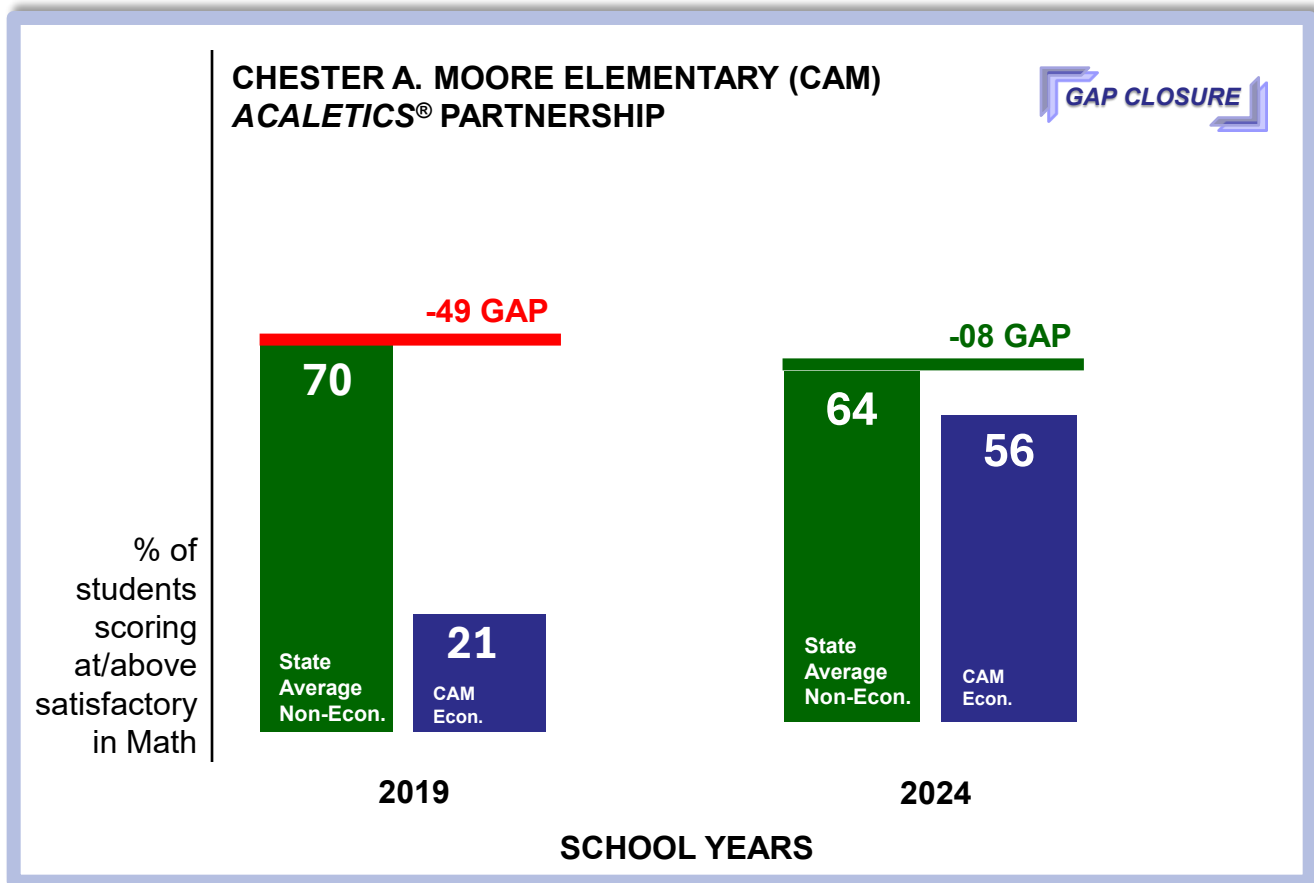
**ELEMENTARY — St. Lucie County**

### 2019 to 2024 Math Achievement Gap

State Average (Non-Econ.)

vs.

Chester A. Moore (Econ.)



Data Source:  FLORIDA DEPARTMENT OF EDUCATION  
fldoe.org

#### Chester A. Moore (CAM):

- CAM has increased its Economically Disadvantaged subgroup Percent Scoring At/Above Satisfactory by **+35** percentage points from 2019 Pre-Covid to 2024 Post-Covid!
- In 2019, CAM's Economically Disadvantaged subgroup was below (-49 percentage points) the State Non-Economically Disadvantaged Subgroup in Percent of Students Scoring At/Above Satisfactory in Math. As a result of our partnership, CAM **reduced** the **achievement gap** by **+41** percentage points in 2024!

## Subgroup Achievement Gap Analysis - Math

**CHARLES DREW**

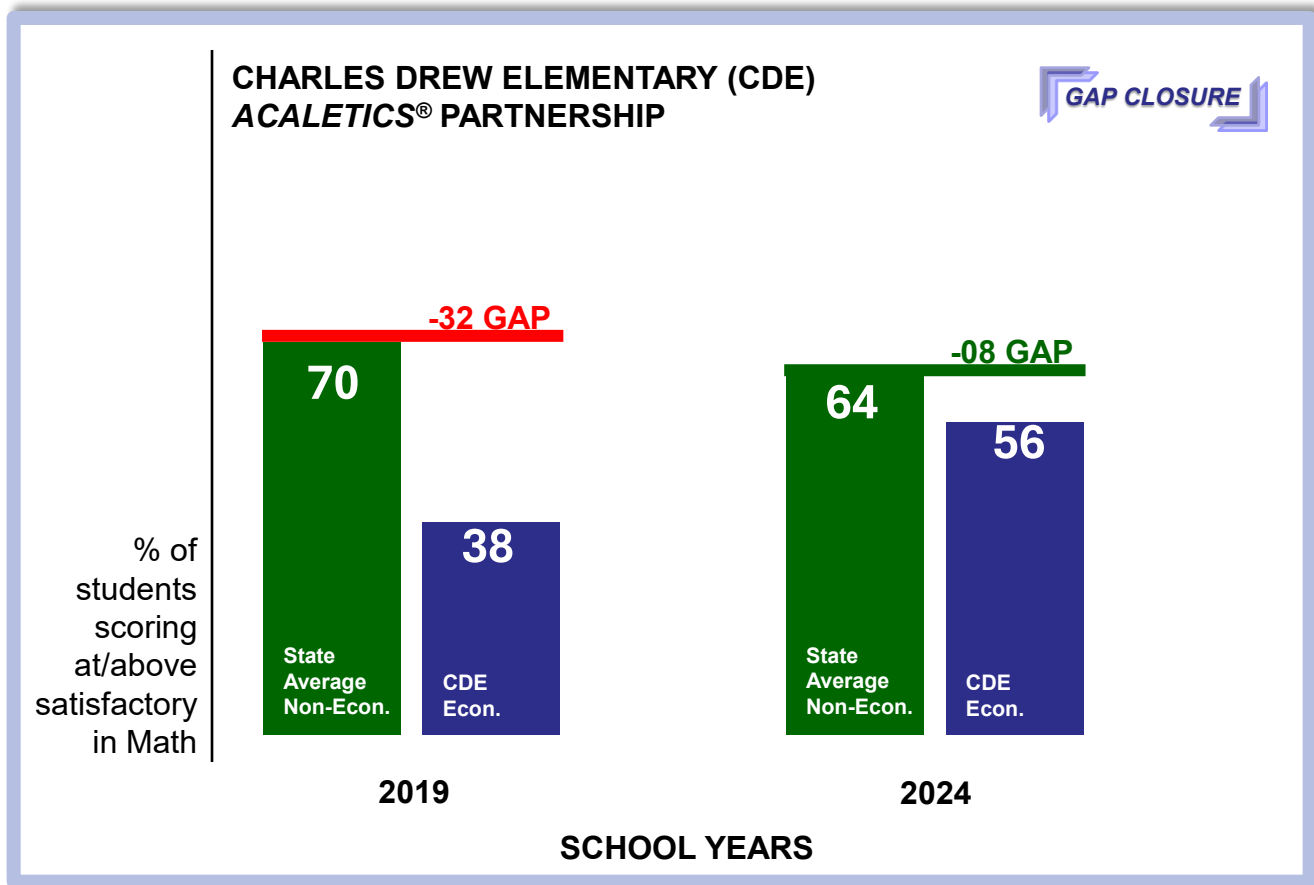
**ELEMENTARY — Broward County**

### 2019 to 2024 Math Achievement Gap

State Average (Non-Econ.)

vs.

Charles Drew (Econ.)



Data Source:



#### Charles Drew Elementary (CDE):

- CDE has increased its Economically Disadvantaged subgroup Percent Scoring At/Above Satisfactory by **+18** percentage points from 2019 Pre-Covid to 2024 Post-Covid!
- In 2019, CDE's Economically Disadvantaged subgroup was below (-32 percentage points) the State Non-Economically Disadvantaged Subgroup in Percent of Students Scoring At/Above Satisfactory in Math. As a result of our partnership, CDE **reduced** the **achievement gap** by **+24** percentage points in 2024!

## Subgroup Achievement Gap Analysis - Math

**WALKER**

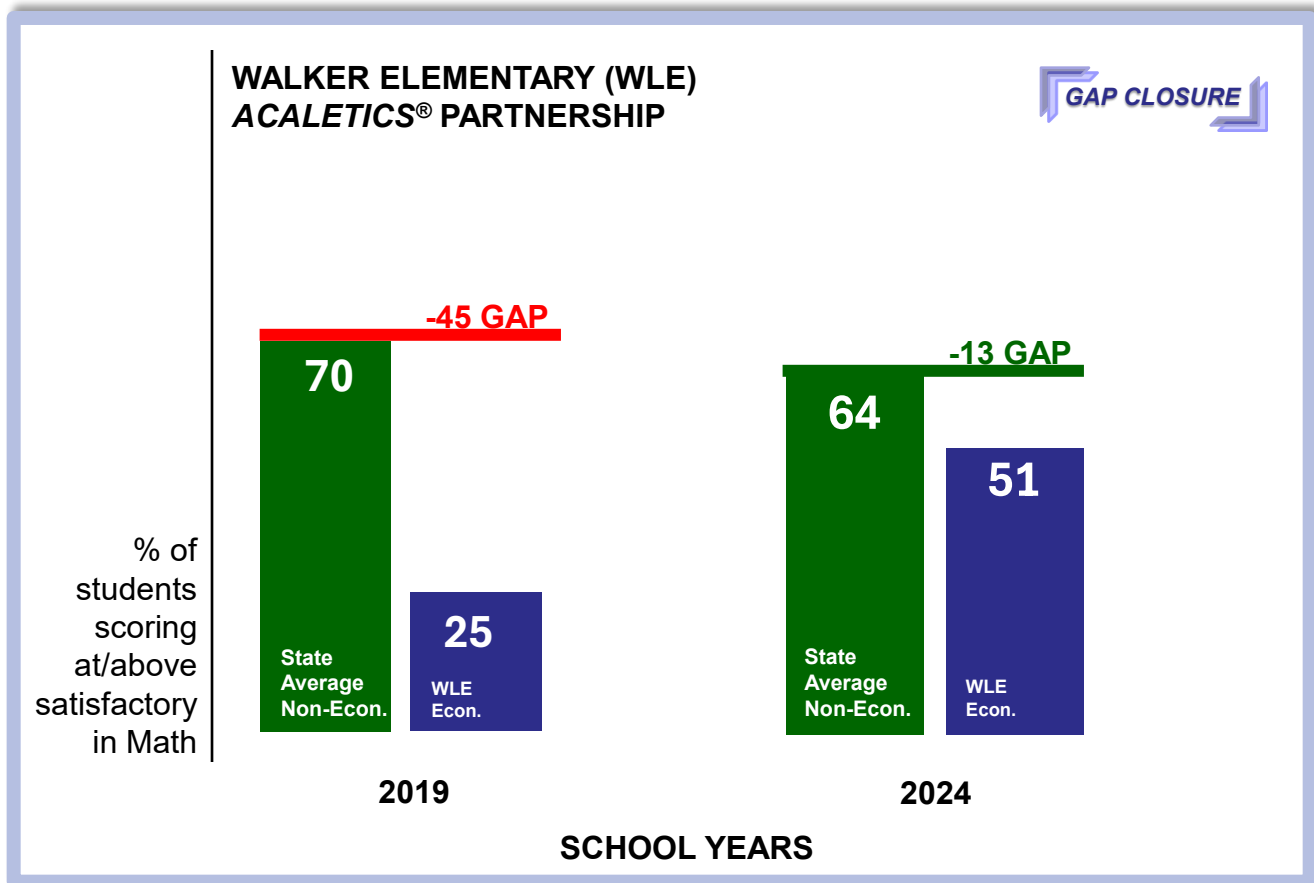
**ELEMENTARY — Broward County**

### 2019 to 2024 Math Achievement Gap

State Average (Non-Econ.)

vs.

Walker (Econ.)



Data Source: FLORIDA DEPARTMENT OF EDUCATION  
fldoe.org

#### Walker Elementary School (WLE):

- WLE has increased its Economically Disadvantaged subgroup Percent Scoring At/Above Satisfactory by **+26** percentage points from 2019 Pre-Covid to 2024 Post-Covid!
- In 2019, WLE's Economically Disadvantaged subgroup was below (-45 percentage points) the State Non-Economically Disadvantaged Subgroup in Percent of Students Scoring At/Above Satisfactory in Math. As a result of our partnership, WLE **reduced** the **achievement gap** by **+32** percentage points in 2024!

# VALUE PROPOSITION

Unlike other educational firms, **ACALETICS®** provides our clients an **extremely high Return On Investment (ROI)**, typically within one school-year, as indicated in the following excerpt from the Miami Herald.

“

*As school systems nationwide sign multi-million dollar contracts with universities and educational companies to save their struggling schools, Educational Development Associates signs individual schools at a fraction of the cost and often produces immediate results using its innovative program ACALETICS.*

- Miami Herald

”

## WE MEASURE ROI IN TERMS OF DRAMATIC RESULTS IN MATH, AS FOLLOWS:

- 1** Achievement  
(% of students scoring at/or above grade level)
- 2** Annual Learning Gains/Growth
- 3** Subgroup Achievement Gap Closure/Elimination/Reversal

### PROFESSIONAL DEVELOPMENT

The Special Venue:  
In the CLASSROOM with  
real students, ***your students!***

### DIFFERENTIATED CONSULTATION (DC)

One size ***does not*** fit all.

### STANDARDS-ALIGNED SUPPLEMENTAL MATERIALS

Our effective “process” is  
embedded in our materials!

We ***reinforce*** our Supplemental  
Materials/Support Tools with our  
customized Online Math Portal.

### PARENT & STUDENT ENGAGEMENT SERVICES

Customized Online Math Portal

Well-received Parent Workshops:  
“Math Club<sup>SM</sup> for Parents”

Incentive Packages for Students

